



# Strategy 5.1 Joliet Township High School

January Board Presentation

January 17, 2018

# Strategy 5.1

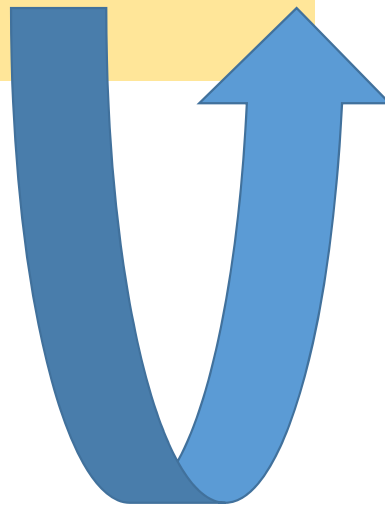
**Implement an in-district program that runs during the school day for students who struggle either academically or behaviorally in the traditional learning environment.**

- Research in-district programs at surrounding schools and identify program components that would benefit JTHS students.
- Determine curriculum, facility, and staffing needs.
- Establish criteria and recommendation procedures for student participation in the program.
- Create and provide necessary professional development.
- Communicate program to appropriate stakeholders.
- Implement the program and develop a plan for the program's sustainability.
- Evaluate the effectiveness of the program annually.

# Expanding Services

## Current Program

- Special Education Services



## Recommended Program

- Structured Supportive Services for Regular and Special Education students
  - Online Learning System (APEX)
  - Social Emotional Supports
  - Vocational skills and experiences
- Crisis Intervention Behavior Stabilization Program (CIBS)
- Special Education Services

# Students Served in Recommended Program



## Regular Education Students

- Student demonstrates poor academic performance lasting for more than a semester and has not responded to interventions routinely employed by the school.
- Student has exhibited poor academic performance in the previous school year that may be due to factors other than student's academic ability (e.g. social emotional, behavioral problems, substance abuse, poor health, changes in life circumstances that affect the student's ability to succeed or motivation to participate in the educational program.
- Students that would benefit from a non-traditional program integrated with social emotional supports.

## Special Education Students

- Referred from the building through the IEP team.
- Students that who would be referred for an outside placement to participate in a CIBS program.



# Recommended Program Offerings

- APEX Learning
  - Online learning platform which is aligned to JTHS District Curriculum
- JTHS Instructional Curriculum
- Social/Emotional Curriculum and Services
- College and Career Readiness



# Admission to the Recommended Program

Special Education Services	Students who struggle in the academically or behaviorally in the traditional learning environment	Crisis Behavior Intervention Stabilization Program (CIBS)
<p>Students will be referred through the IEP team per IDEA guidelines and mandates.</p>	<p>Students participating in the program will be referred through the Behavioral Health Team and/or administration.</p>	<p>Students will be referred to the program through the IEP team per IDEA guidelines and mandates.</p>
	<p>Information regarding the program and written notification will be sent to the student's parents.</p>	
	<p>A required conference will be scheduled with parent and team to review the benefits and the personalization of the program for the student.</p>	
	<p>Student will participate in an entrance interview.</p>	
	<p>If the student is recommended for admittance to the program, the parent will sign consent for participation.</p>	

# Recommended Staffing

## Current Staffing

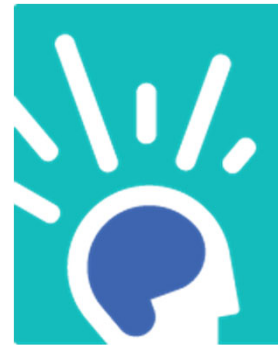
- 6 teachers
- Social Worker
- Guidance Counselor (.6 FTE)
- Dean
- Administrator
- 7 Paraprofessionals
- 3 Security staff
- Police Liaison

## Proposed Staffing

- 7 teachers
- Social Worker
- Guidance Counselor (1 FTE)
- Dean
- Administrator
- 7 Paraprofessionals (continued to be determined by students IEP)
- 3 Security staff
- Police Liaison

# Other Considerations & Needs

- APEX system (Online Learning System) \$14,000
- Learning Labs furniture
- Re-organization of main entrance to cultivate a welcoming environment
- Update classrooms to create an inviting environment for learning and collaboration



**Apex**  
**Learning**®



# Alternate Campus



# Campus Vision



# Key Points

- Increase 1.4 FTE
- Purchase online learning system
- Provide professional development for all staff
- Evaluate teacher certifications needed and post positions
- Update Director of District Alternative Programs job responsibilities
- Update student learning environment
- Change campus name
- Establish evaluation plan of program services

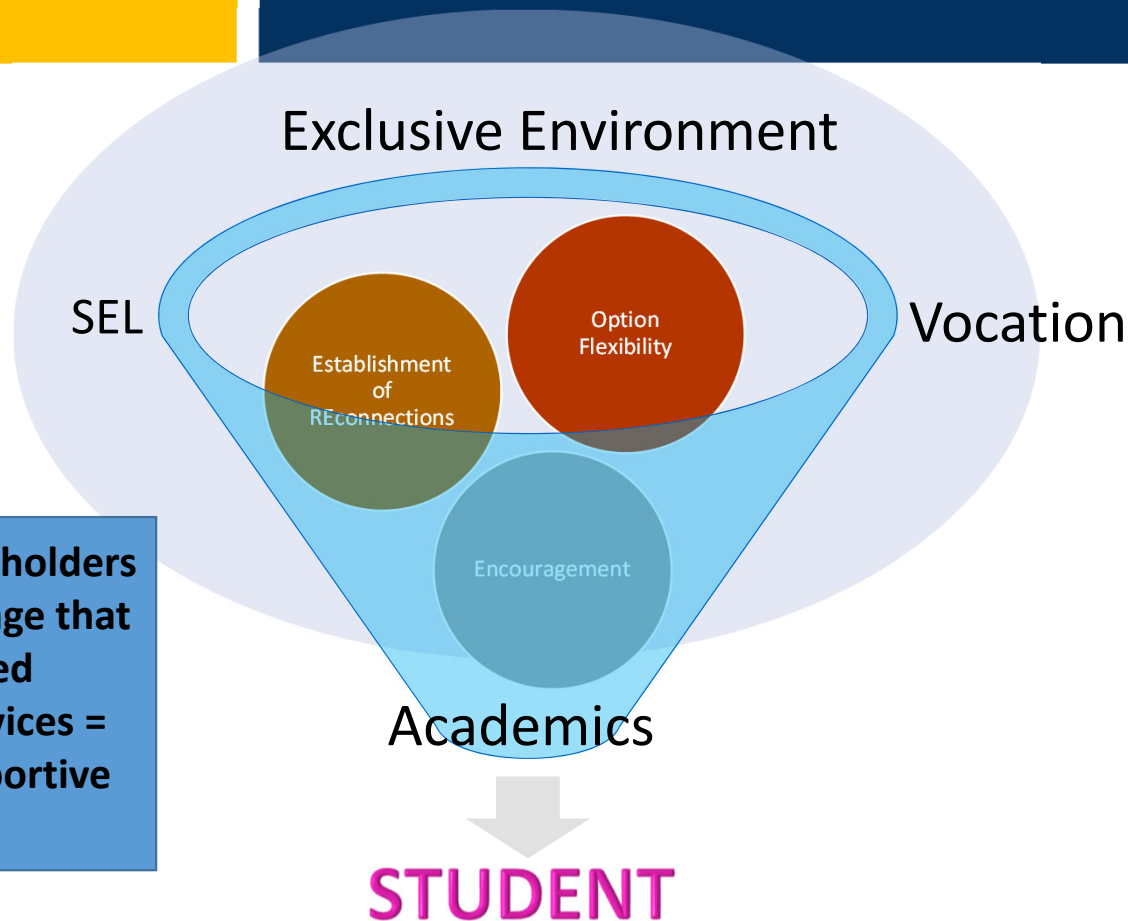


# Funding Sources

- IDEA
- Title 1
- Evidence Based Funding



# Joliet Township Pathways Campus



Requires all stakeholders to replace language that we have used  
Alternative Services = Structured Supportive Services

Looking at different pathways to support, guide, and empower students to access the academic environment so that they can compete and contribute positively in our communities and globally